



Donnybrook Traffic Safety Rules 2024

The safety of our students is paramount. Every parent is expected and required to work in partnership with the School in ensuring the welfare of all members of the school community.

The information contained in this booklet clearly describes the rules of the road for all vehicles that enter and use the School grounds. They are designed to ensure the safety of all who use the roads and carpark both within the School's grounds and immediately outside the campus gates, including pedestrians, drivers and passengers. Responsible driver behaviour is one essential element that will help ensure the safety of our students, parents and staff is not compromised.

The principles upon which these rules have been created are derived from two of our school values:

Respect - principled and disciplined; we care for ourselves and value others.

Integrity - a community whose members are accountable, responsible and trustworthy.



Contents

Front Page.....1

Speed Limits3

Traffic Areas at Donnybrook.....3

Accessing the School.....3

No Parking Zones.....3

No Standing Zones.....3

Disabled Parking3

Duty Staff.....4

Pick-up and Drop-off Zones.....4

Main Carpark.....5

Eucalyptus Parade.....6

Bus Zone6

Car Pooling6

Accidents6

Enforcement by Victorian Police.....6



Speed Limits

The entire Donnybrook Campus is a pedestrian shared zone and has a 5 kmph maximum speed limit at all times.

Please note, these are maximum speed limits, and in certain circumstances lower speeds will be required, for the safety of all concerned.



Eucalyptus Parade, Hayes Hill Boulevard and Olivine Boulevard, between 8:00-9:30am and from 2:30-4:00pm, are School Zones with a **maximum** speed of **40kmph**.

Traffic Areas at Donnybrook

- Carparks: there is one official parking area in 2024.
 - Main Carpark
- Drop-off/Pick-up Zones: there are three drop-off/pick-up zones.
 - On the northern, eastern and southern sides of the Main Carpark
- Special Areas: a number of special areas are designated.
 - Bus Zone – Gate 1
 - Disabled carpark – in the main carpark as clearly marked

Accessing the School

There are five gates to the school. These include three pedestrian entrances, the Main Carpark and the Bus Zone. The pedestrian entrances located at Eucalyptus Parade, Hayes Hill Boulevard and Olivine Boulevard can be used for general access. They are unlocked between 8:15am and 8:45am, 3:15pm and 3:45pm and no access granted between 11am-11:30am and 1:30pm and 2:30pm. Access to the Main Carpark is permitted following the guidelines below, including no parking during school drop-off.

No Parking Zones

- Disabled Parking: These **are in operation 24 hours a day, 365 days a year**. You may only use them if your circumstances fulfil the criteria for utilising these spaces.

No Standing Zones

The following areas are designated as No Standing:

- All pedestrian pathways
- Grassed areas
- Roadways

Disabled Parking

There is disabled parking available. These are clearly signposted and is in effect at all times regardless of whether it is a school day, weekend or school holiday. Only vehicles displaying an authorised Disability Parking Permit may use these spaces.



Duty Staff

Teaching staff have duties at the start and end of each day monitoring the Main Carpark. These staff have as their primary role, the care of the students and other pedestrians. They have low-level responsibility to monitor traffic and guide vehicles as required. Senior leadership will support staff on duty and provide additional assistance where needed.

All drivers must follow the instructions of all duty staff and it is expected they will show courtesy and be immediately compliant to any direction given.

Pick-up and Drop-off Zones

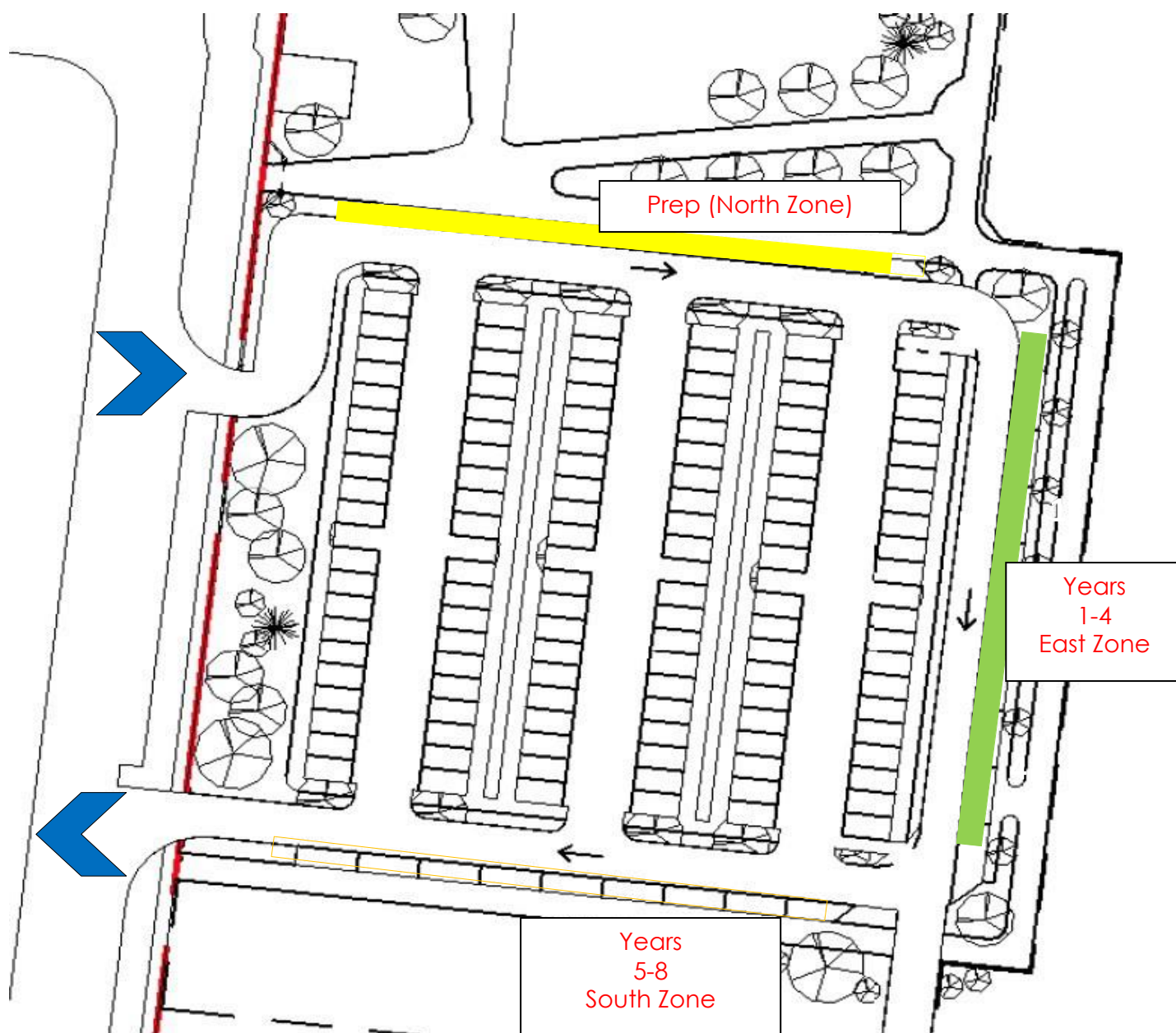
There are three pick-up/drop-off zones in the school, on the northern, eastern and southern sides of the Main Carpark.

Procedures for the use of these zones are:

- **NEVER leave your car** in the pick-up/drop-off zones.
 - These are the only pick-up/drop-off zones to be used for this purpose. There is no other provision to pick-up/drop-off students.
 - Parents are not permitted to park in the carpark during drop-off. They must use only the drop-off zone.
 - When dropping off, prepare your children to exit from the left side of the car only, as quickly as possible. Arrive between 8:15am and 8:30am.
 - When dropping off, either the North or East zone may be used. Please go right to the end to allow for traffic flow and immediately move on once you have dropped off your children, being sure to use your indicator and give way as you move onto the roadway.
 - Parents are permitted to park in the carpark during pick-up. They may also use the pick-up zones.
- When picking up, students will assemble in year level groups under the direction of their teachers. Pick-up for Prep will be at the North zone, Year 1 to 4 at the East zone and Year 5 to 8 in the South Zone.
- Continue moving to the end of the zone to allow cars waiting behind to enter the zone.
 - **Never reverse** in the pick-up/drop off zones.
 - Follow the directions given to you by the duty staff. Students with siblings or travelling with other children will wait with the oldest child.
 - If parked in the carpark, at **3:15pm**, not beforehand, parents may leave their car and cross at the **pedestrian crossing only** located in the north-east corner to collect their child from outside their building or near the pedestrian gate.



Pick-Up in Main Carpark



Exiting Main Carpark- Turning Left

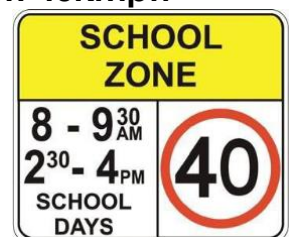
Between the hours of 8am and 9am and 3pm and 4pm, when exiting the carpark, all cars are to turn left. Cars heading towards Craigieburn/Kalkallo can turn left at Cycad Avenue, left into Olivine Boulevard and left into Hayes Hill Boulevard. This is a safer way to exit the carpark due to oncoming traffic along with allowing for better flow in and out of the carpark.



Eucalyptus Parade

During the hours of 8:00-9:30am and 2:30-4:00pm, Eucalyptus Parade, Hayes Hill Boulevard and Olivine Boulevard are School Zones with a **maximum 40kmph** speed limit.

Parents are not permitted to pull off the road, or stop in the middle of the road, to drop off or pick up students. It is extremely dangerous as students then attempt to navigate walking alongside or crossing a busy road. There are parking spaces along Eucalyptus Parade, Hayes Hill Boulevard and Olivine Boulevard that can and should be utilised to park and come into the school.



Bus Zone

School Buses enter the bus zone through Gate 1. There is no pedestrian access through Gate 1.

Car Pooling

Parents are encouraged to carpool as it greatly assists in alleviating traffic congestion. Such arrangements are private between the individuals involved.

Accidents

If there is an accident you are required by law to remain and exchange details with any other vehicle or person involved. To not do so is called 'leaving the scene of an accident' and is a most serious offence. It is very important this law is obeyed, regardless of the size of the accident or where it occurred. Such incidents are a civil matter between the drivers involved. The School accepts no responsibility for accidents that occur on its grounds.

Enforcement by Victorian Police

Victorian traffic laws apply on the school campus and are no different to any public road. The Police have come onto the school's grounds in the past, and will continue to do so, to enforce road laws. Drivers who speed, disobey road signs, park in disabled spaces or loading zones, are liable to be pulled over and fined by police.

The School supports law enforcement in this role and will provide the Police with any assistance they require in ensuring drivers abide by the rules of the road.

If parents are unsure of any traffic rules, you are encouraged to visit the VicRoads website at: <https://www.vicroads.vic.gov.au/safety-and-road-rules>



Children's safety is our core concern