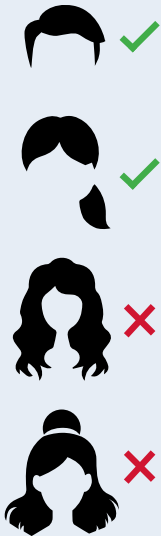


BLAZER

All blazers must be kept clean and in a state of good repair. Blazers must be worn to all formal school assemblies and chapel services when the academic uniform is worn. Students are encouraged to wear their blazer wherever possible. Blazer sleeves are not to be rolled up.

HAIR

Hair that is longer than the bottom of the shirt/dress collar must be tied up. Hair must be of natural colour, no shorter than a number 2 clipper, and no extreme hairstyles are permitted. Students are expected to be clean shaven.



OUTERWEAR

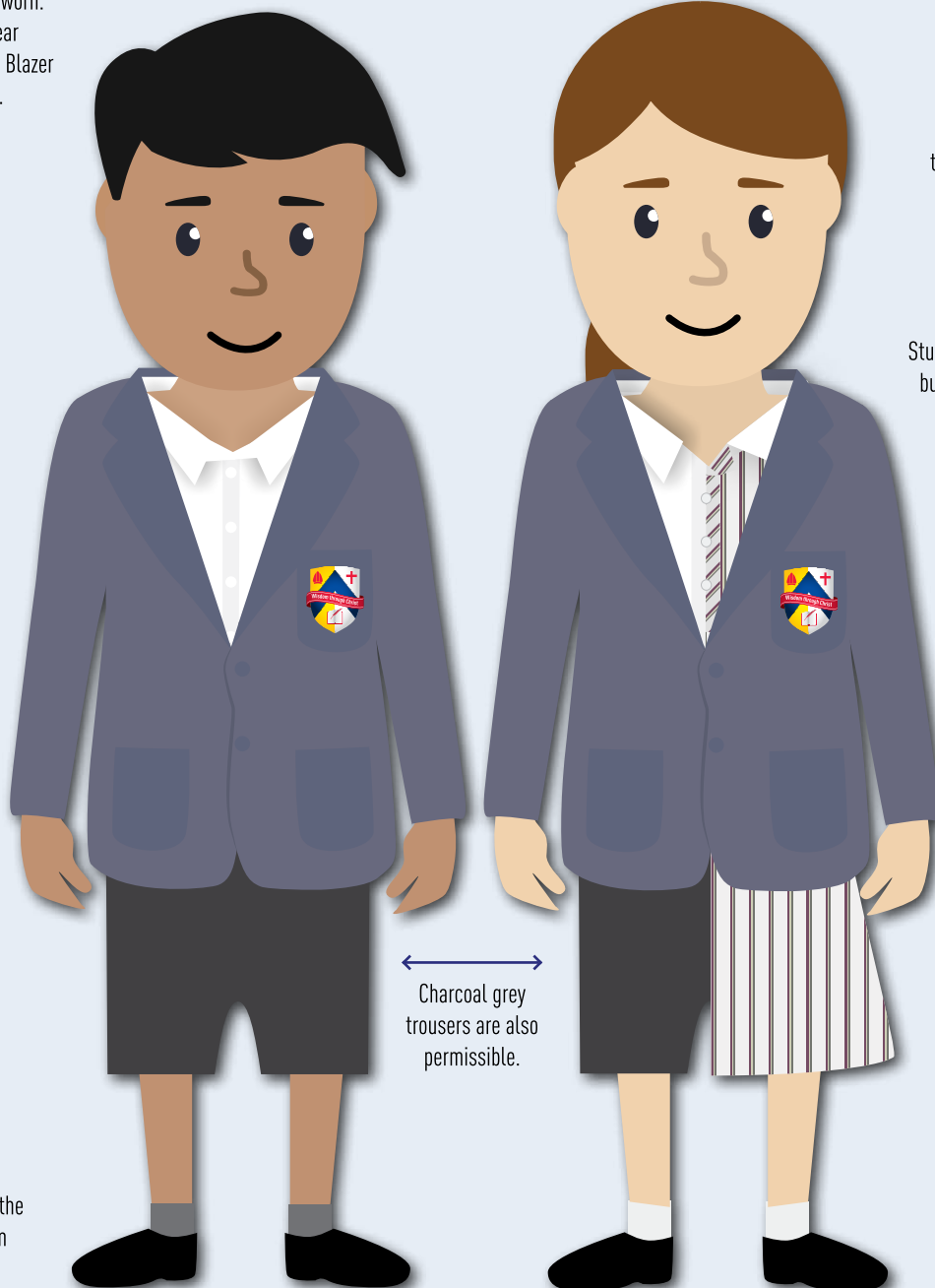
Spray jackets may be worn as the outermost garment to and from school, and outdoors. They are not permitted to be worn during class or indoors.

SOCKS

Girls wear plain white socks and boys wear plain dark grey socks. Socks must cover the ankle.

DRESS, SHORTS OR TROUSERS

Students are permitted to wear either the school dress OR shorts OR trousers and white short-sleeved shirt. Dress and shorts length should be at the knee.



HEADWEAR

Hair ties may be navy, maroon or black. Only navy or maroon ribbons and scrunchies are permitted (ie. not black). Headwear such as a turban, patka or headscarf must be either navy or maroon.

PIERCINGS

Piercings are only permitted in the ear lobes. No more than two items may be worn in each ear lobe, either 3mm studs or traditional 10-12mm sleepers, no more than 1mm thick. No designs, hoops, stretchers or large solitaires are permitted. Studs may have a coloured centre but must be otherwise plain and understated.

JUMPERS

The red jumper (or navy VCE jumper for Year 12 students) may be worn all year round.



ACCESSORIES & COSMETICS

Only approved items carrying the Hume Anglican Grammar logo are permitted to be worn as accessories, including scarves and hats. Eye and face makeup (including false eyelashes), lipstick, false nails and nail polish are not permissible at any time.

SHOES

All students are required to wear black leather school shoes either with laces or T-bar style.

ANY QUESTIONS?

If you have any further questions about correct uniform, please talk to your Homeroom Teacher or refer to the School Uniform Policy on our website.

BLAZER

All blazers must be kept clean and in a state of good repair. Blazers must be worn to all formal school assemblies and chapel services when the academic uniform is worn. Students are encouraged to wear their blazer wherever possible. Blazer sleeves are not to be rolled up.

HAIR

Hair that is longer than the bottom of the shirt/dress collar must be tied up. Hair must be of natural colour, no shorter than a number 2 clipper, and no extreme hairstyles are permitted. Students are expected to be clean shaven.



OUTERWEAR

Spray jackets may be worn as the outermost garment to and from school, and outdoors. They are not permitted to be worn during class or indoors.

SHOES

All students are required to wear black leather school shoes either with laces or T-bar style.

SOCKS & TIGHTS

Girls wear plain navy school socks or tights. Boys wear plain dark grey socks. Socks must cover the ankle and black socks are not permitted.



PIERCINGS

Piercings are only permitted in the ear lobes. No more than two items may be worn in each ear lobe, either 3mm studs or traditional 10-12mm sleepers, no more than 1mm thick. No designs, hoops, stretchers or large solitaires are permitted. Studs may have a colour centre but must be otherwise plain and understated.

HEADWEAR

Hair ties may be navy, maroon or black. Only navy or maroon ribbons and scrunchies are permitted (ie. not black). Headwear such as a turban, patka or headscarf must be either navy or maroon.

SHIRT & TIE

The long-sleeved white shirt must be tucked in at all times. The school tie must be worn at all times during Terms 2 and 3 when wearing the Winter Uniform. Ties must be worn correctly, located at the top of the shirt collar.



ACCESSORIES & COSMETICS

Only approved items carrying the Hume Anglican Grammar logo are permitted to be worn as accessories, including scarves and hats. Eye and face makeup (including false eyelashes), lipstick, false nails and nail polish are not permissible at any time.

ANY QUESTIONS?

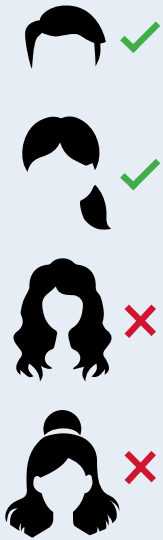
If you have any further questions about correct uniform, please talk to your Homeroom Teacher or refer to the School Uniform Policy on our website.

BLAZER

Blazers (Year 6 only) must be worn to all formal school assemblies and chapel services when the academic uniform is worn. They are to be worn with pride and must not have the sleeves rolled up.

HAIR

Hair that is longer than the bottom of the shirt/dress collar must be tied up. Hair must be of natural colour, no shorter than a number 2 clipper, and no extreme hairstyles are permitted.



SOCKS

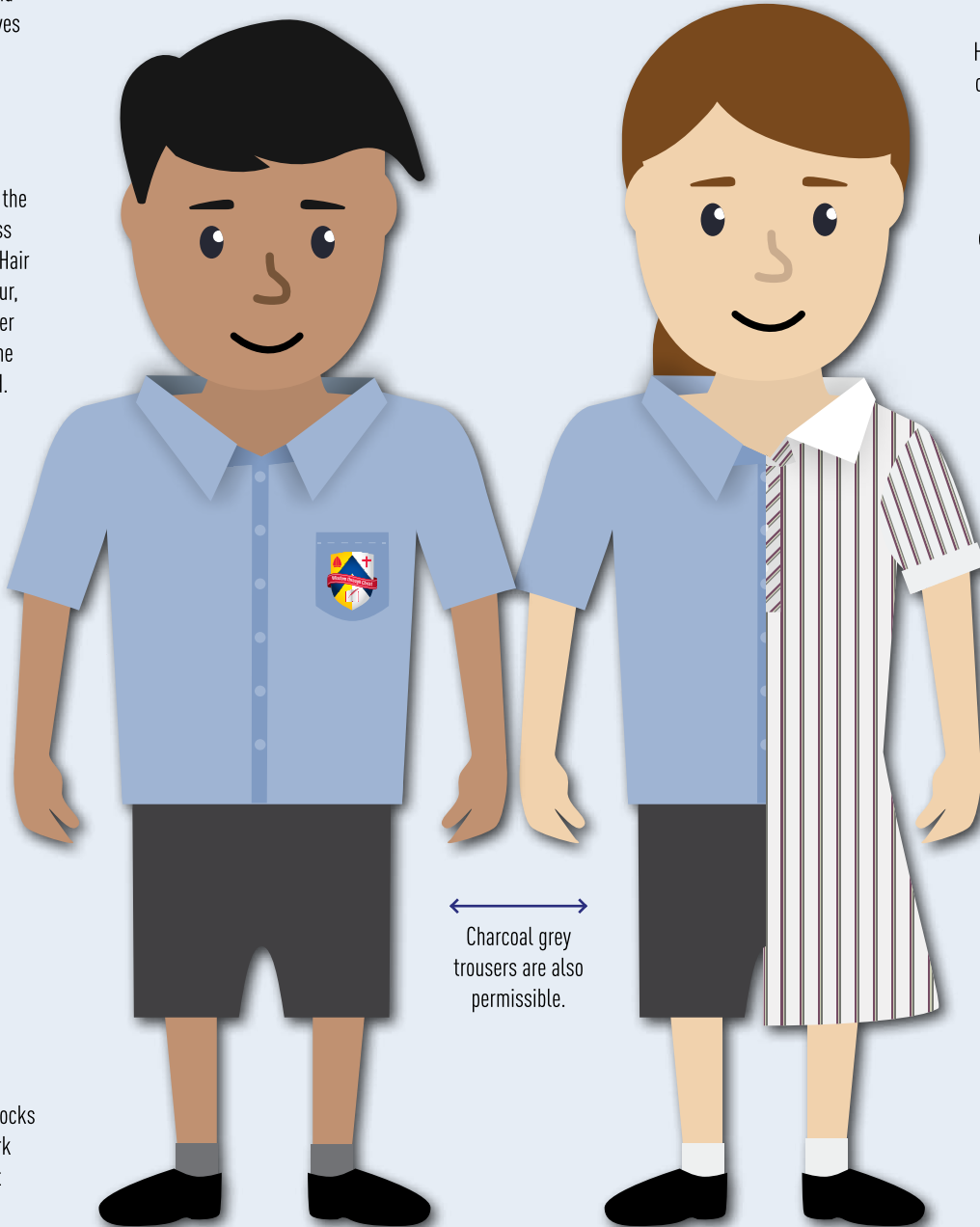
Girls wear plain white socks and boys wear plain dark grey socks. Socks must cover the ankle.

SHOES

All students are required to wear black leather school shoes either with laces or T-bar style. Students in P-2 may wear Velcro-style black school shoes.

DRESS, SHORTS OR TROUSERS

Students are permitted to wear either the school dress OR shorts OR trousers and chambray short-sleeved shirt. Dress and shorts length should be at the knee.



Piercings are only permitted in the ear lobes. No more than two items may be worn in each ear lobe, either 3mm studs or traditional 10-12mm sleepers, no more than 1mm thick. No designs, hoops, stretchers or large solitaires are permitted. Studs may have a colour centre but must be otherwise plain and understated.

PIERCINGS

HEADWEAR

Hair ties may be navy, maroon or black. Only navy or maroon ribbons and scrunchies are permitted (ie. not black). Headwear such as a turban, patka or headscarf must be either navy or maroon. A navy bucket hat with logo OR navy slouch hat with logo must be worn outdoors.

JUMPERS

The red jumper may be worn all year round.



ACCESSORIES & COSMETICS

Only approved items carrying the Hume Anglican Grammar logo are permitted to be worn as accessories, including scarves and hats. Eye and face makeup, lipstick and nail polish are not permissible at any time.

OUTERWEAR

Spray jackets may be worn as the outermost garment to and from school, and outdoors. They are not permitted to be worn during class or indoors.

ANY QUESTIONS?

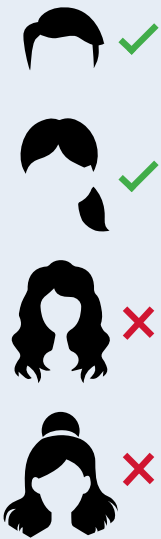
If you have any further questions about correct uniform, please talk to your Homeroom Teacher or refer to the School Uniform Policy on our website.

BLAZER

Blazers (Year 6 only) must be worn to all formal school assemblies and chapel services when the academic uniform is worn. They are to be worn with pride and must not have the sleeves rolled up.

HAIR

Hair that is longer than the bottom of the shirt/dress collar must be tied up. Hair must be of natural colour, no shorter than a number 2 clipper, and no extreme hairstyles are permitted.



OUTERWEAR

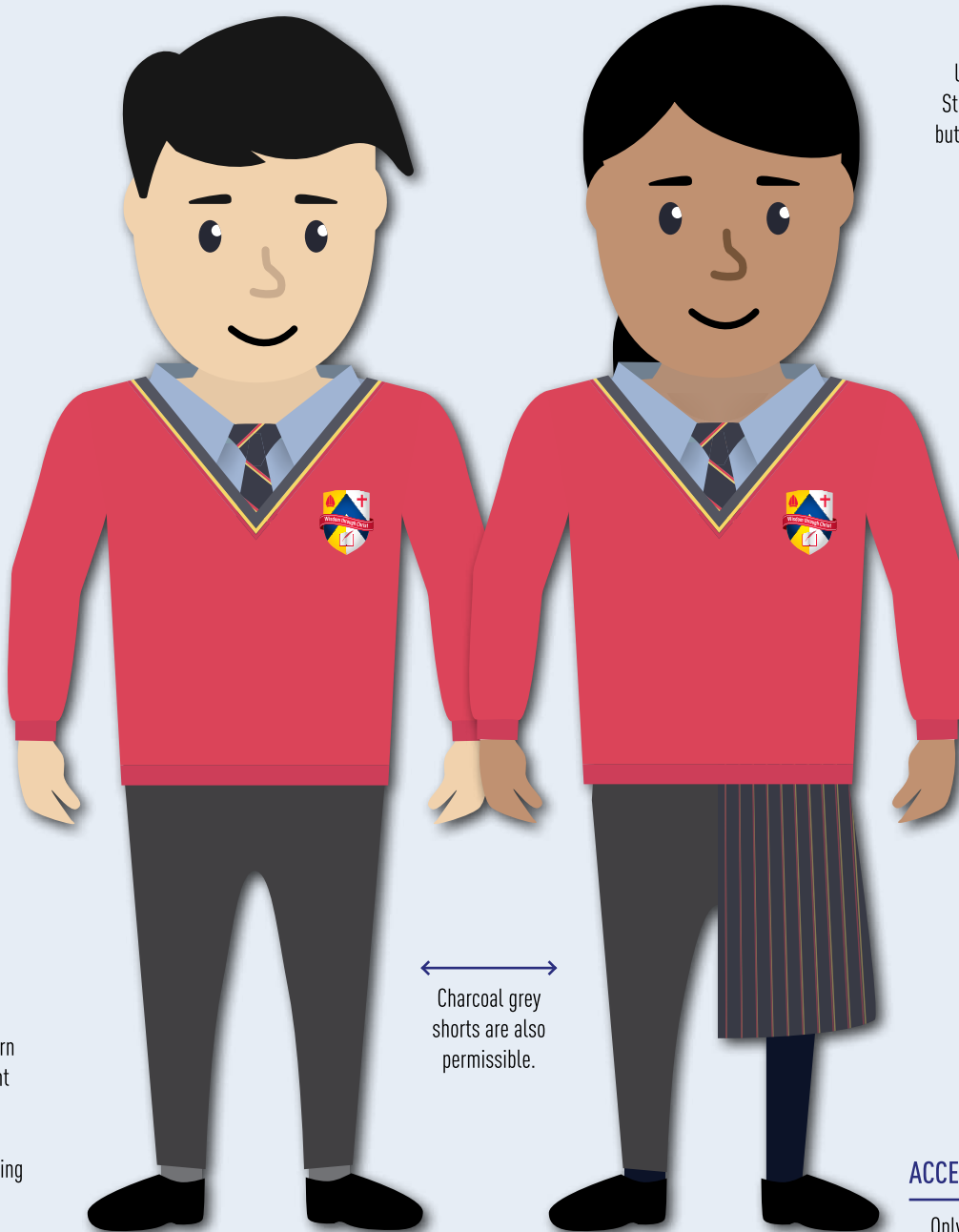
Spray jackets may be worn as the outermost garment to and from school, and outdoors. They are not permitted to be worn during class or indoors.

SOCKS

Girls wear plain navy socks or tights. Boys wear plain dark grey socks. Socks must cover the ankle.

SHOES

All students are required to wear black leather school shoes either with laces or T-bar style. Students in P-2 may wear Velcro-style black school shoes.



Charcoal grey shorts are also permissible.



PIERCINGS

Piercings are only permitted in the ear lobes. No more than two items may be worn in each ear lobe, either 3mm studs or traditional 10-12mm sleepers, no more than 1mm thick. No designs, hoops, stretchers or large solitaires are permitted. Studs may have a colour centre but must be otherwise plain and understated.

HEADWEAR

Hair ties may be navy, maroon or black. Only navy or maroon ribbons and scrunchies are permitted (ie. not black). Headwear such as a turban, patka or headscarf must be either navy or maroon.

TIE

The school tie must be worn at all times during Terms 2 and 3 for students in Years 3 to 6 as part of the winter uniform. Ties must be worn correctly, located at the top of the shirt collar.

ACCESSORIES & COSMETICS

Only approved items carrying the Hume Anglican Grammar logo are permitted to be worn as accessories, including scarves and hats. Eye and face makeup, lipstick and nail polish are not permissible at any time.

ANY QUESTIONS?

If you have any further questions about correct uniform, please talk to your Homeroom Teacher or refer to the School Uniform Policy on our website.